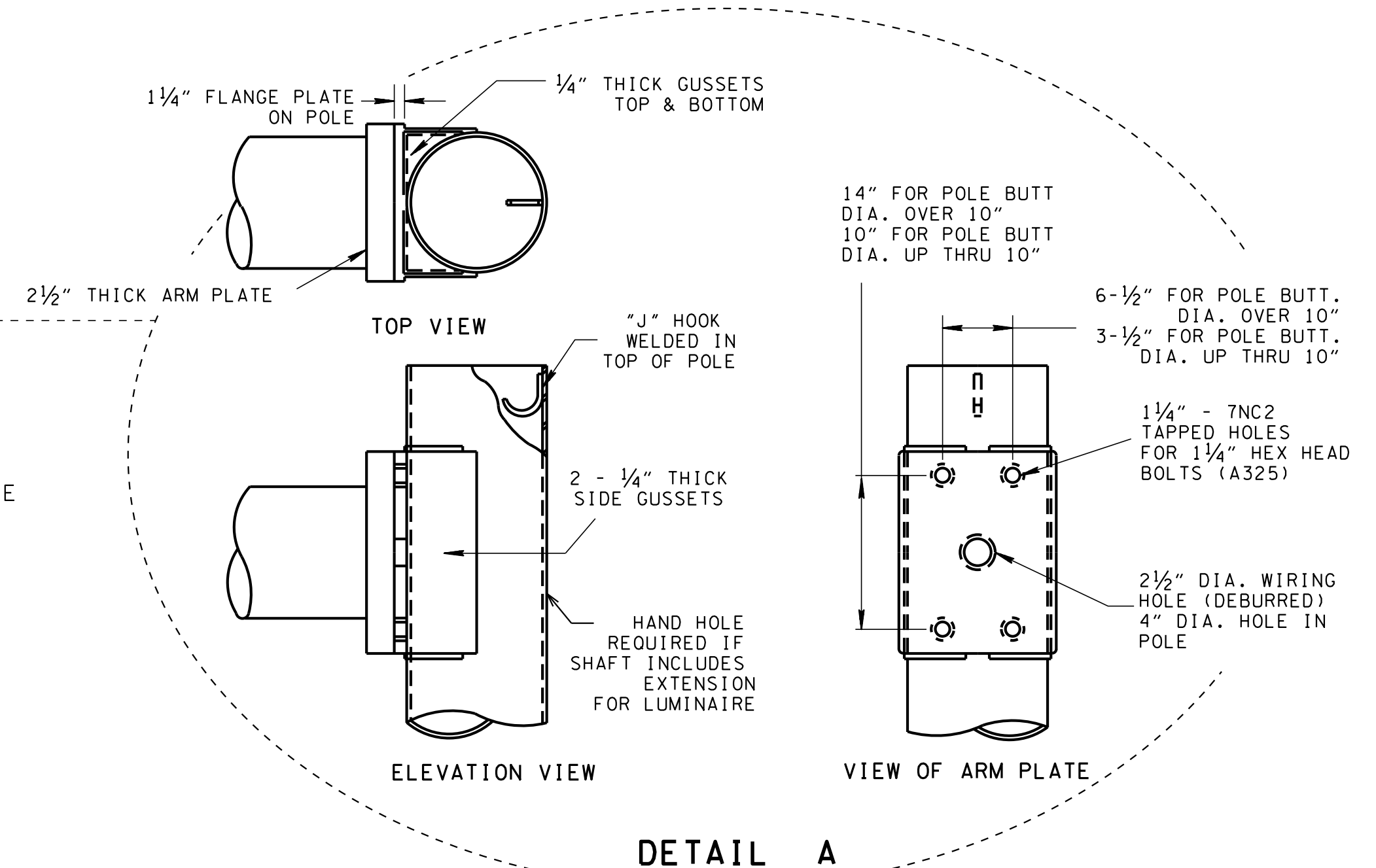
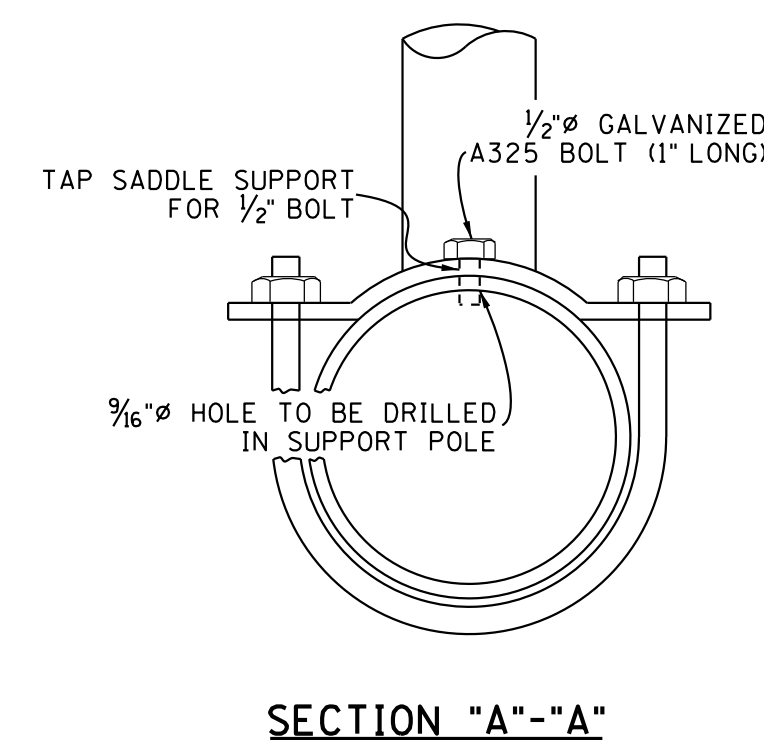
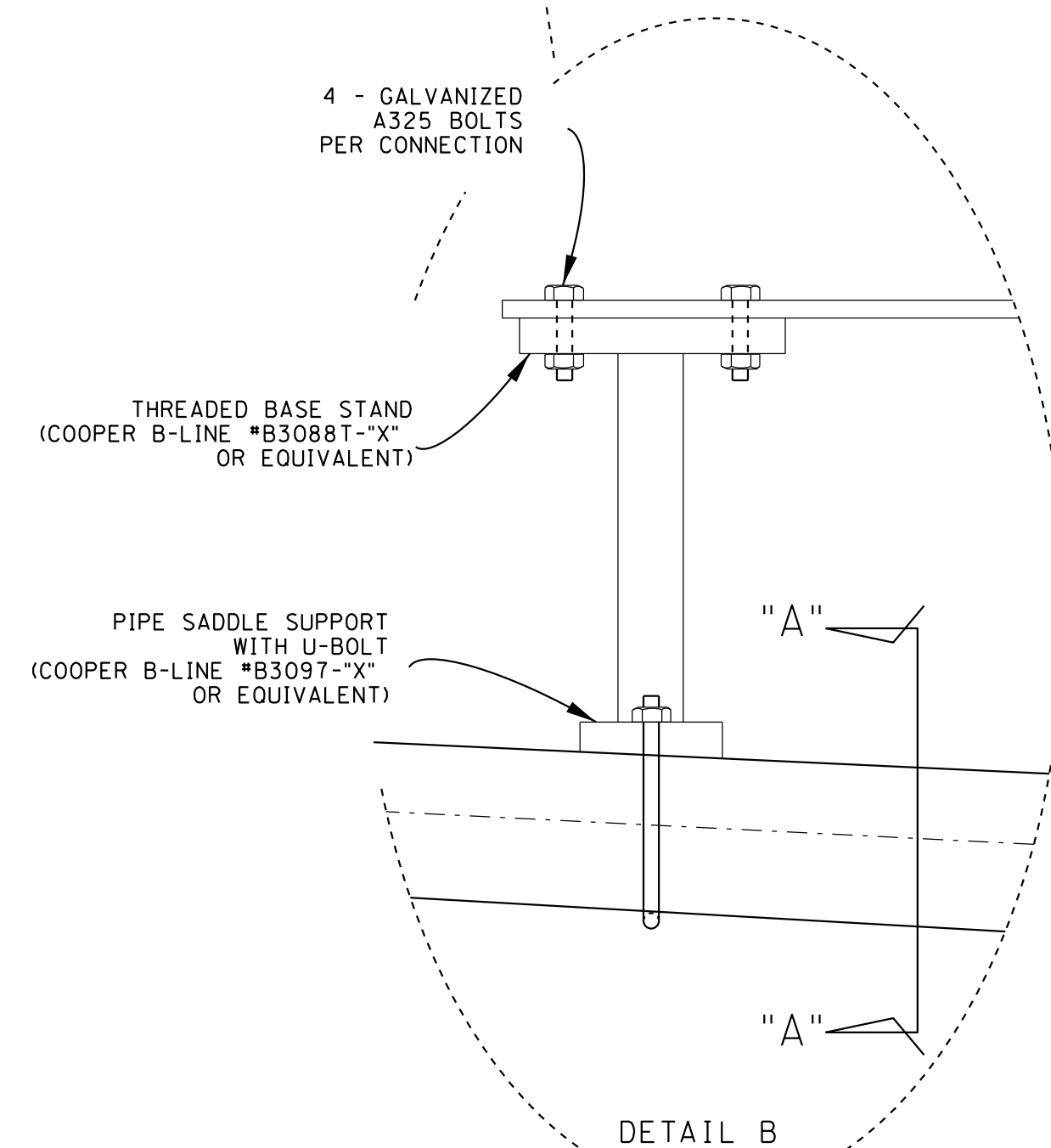
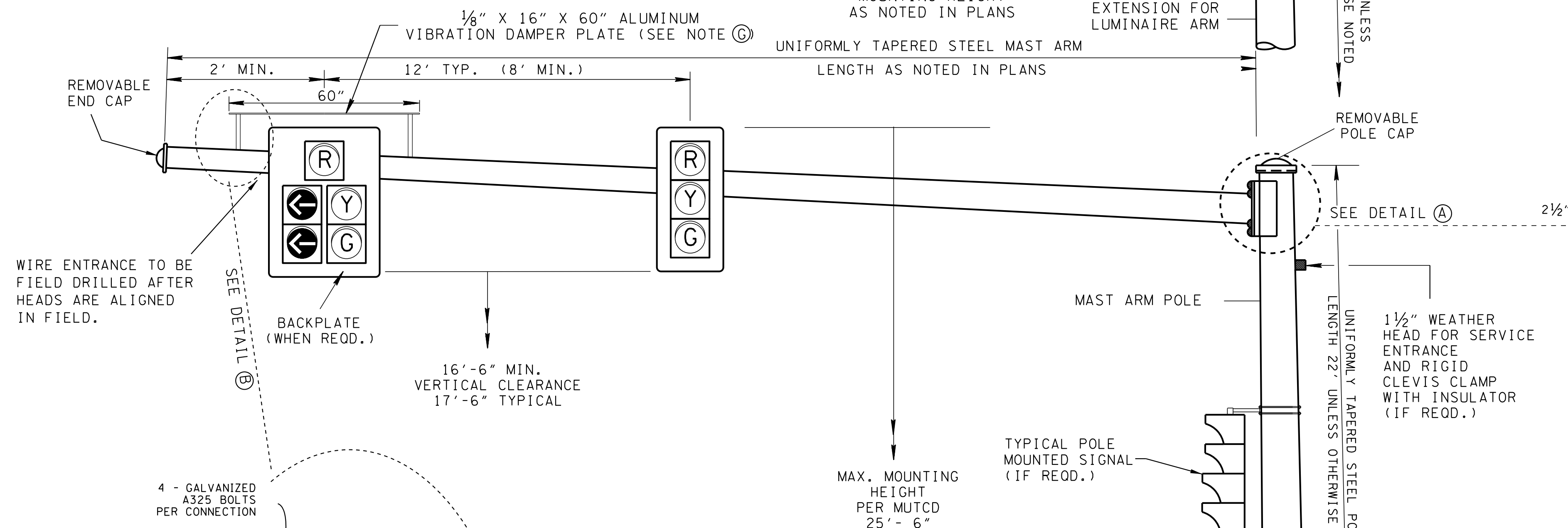
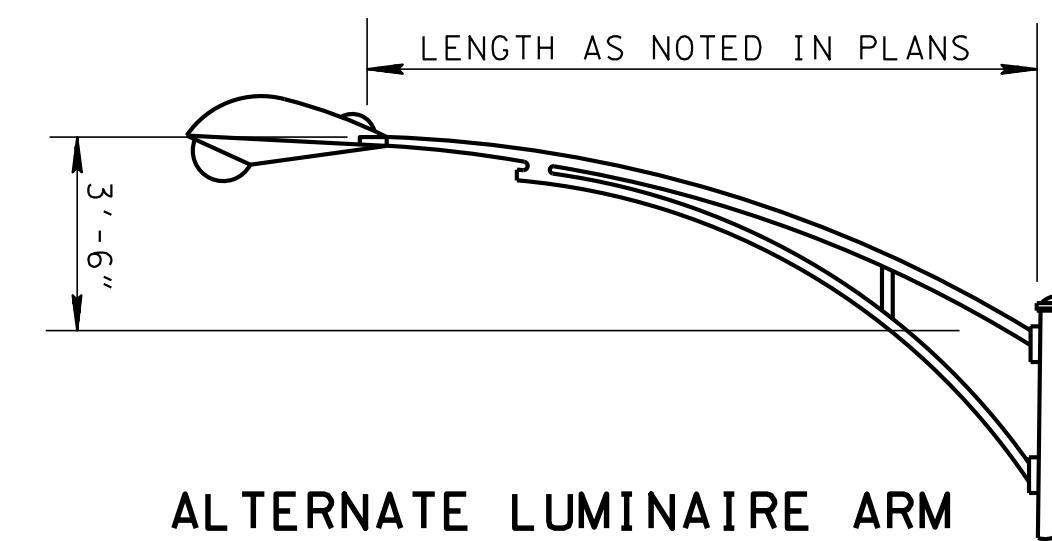
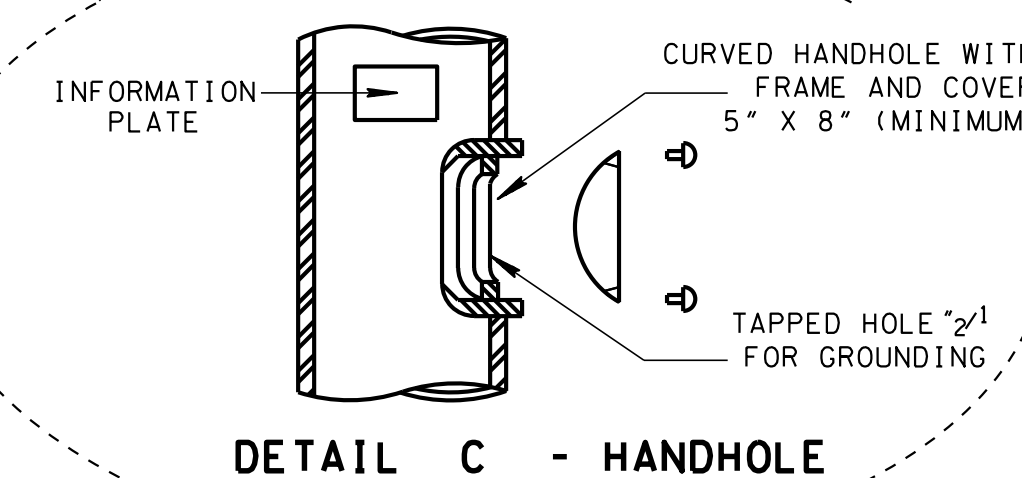


## DETAIL FOR LUMINAIRE EXTENSION AS REQUIRED BY PLANS



## MAST ARM GENERAL NOTES

- (A) ADJUSTMENT OF MAST ARM POLE FOUNDATIONS MAY BE ADJUSTED UP TO 2'. ADJUSTMENTS GREATER THAN 2' MUST BE REVIEWED AND APPROVED BY ENGINEER.
- (B) IF CABINET IS POLE MOUNTED, POWER SERVICE CABLE MAY BE RUN DOWN OUTSIDE OF STEEL STRAIN POLE IN 1" RGS RISER AS ALTERNATE TO INTERNAL RUN. UNDERGROUND POWER SERVICE SHALL BE RUN THROUGH SEPARATE 1" RGS CONDUIT THROUGH POLE FOUNDATION (SEE STD. DWG. T-SG).
- (C) ENTRANCES FOR MAST ARM AND POLE MOUNTED SIGNAL HEADS SHALL BE FIELD DRILLED TO ENSURE PROPER PLACEMENT.
- (D) THE BOTTOM OF ALL SIGNAL HEADS ON EACH APPROACH TO BE APPROX. SAME HEIGHT.
- (E) SIGNALS TO BE MOUNTED WITH 17' 6" TYPICAL VERTICAL CLEARANCE (16' 6" MIN.). MAXIMUM MOUNTING HEIGHT SHALL BE CHECKED PER MUTCD AND HEIGHT ADJUSTED IF NECESSARY.
- (F) PEDESTRIAN SIGNAL HEADS TO BE CLAMSHELL MOUNTED UNLESS OTHERWISE SHOWN ON PLANS.
- (G) VIBRATION DAMPER PLATE SHOULD BE INSTALLED ON ALL MAST ARMS 50' OR LONGER AND ALWAYS BE INSTALLED AT OUTSIDE TIP.



## VIBRATION DAMPER PLATE DETAILS

POLE MANUFACTURER  
MANUFACTURER DESIGN NO.  
DATE OF MANUFACTURE  
TDOT PROJECT NO.

EXAMPLE  
ACME POLE COMPANY  
DESIGN NO. 01234  
DATE OF MANUFACTURE 12-31-03  
TDOT PROJECT NO. CM-STP-106(4)

## TYPICAL POLE INFORMATION PLATE

MIN. 2" X 4"  
(TO BE ATTACHED TO POLE BASE ADJACENT TO HANDHOLE)

MINOR REVISION -- FHWA  
APPROVAL NOT REQUIRED.

STATE OF TENNESSEE  
DEPARTMENT OF TRANSPORTATION

DETAILS  
OF  
CANTILEVER  
SIGNAL SUPPORT

T-SG-9

REV. 7-29-92: DELETED CLAMP AND CLEVIS MOUNT FOR SIGNAL HEADS.

REV. 7-29-96: REDREW SHEET ON CADD AND MADE MINOR CHANGES.

REV. 12-16-03: REDREW SHEET, REV. SIGNAL MOUNTING BRACKET, ADDED SIGN MOUNTING BRACKET DETAIL AND REDREW POLE DETAIL. ADDED MAX. MOUNTING HEIGHT FOR SIGNAL HEADS AND ADDED HAND HOLE DETAIL.

REV. 7-29-04: REDREW AND REDESIGNED SHEET.

REV. 11-16-07: ADDED VIBRATION DAMPER PLATE DETAILS.

REV. 12-4-13: CHANGED ANCHOR BOLTS TO THREADED.